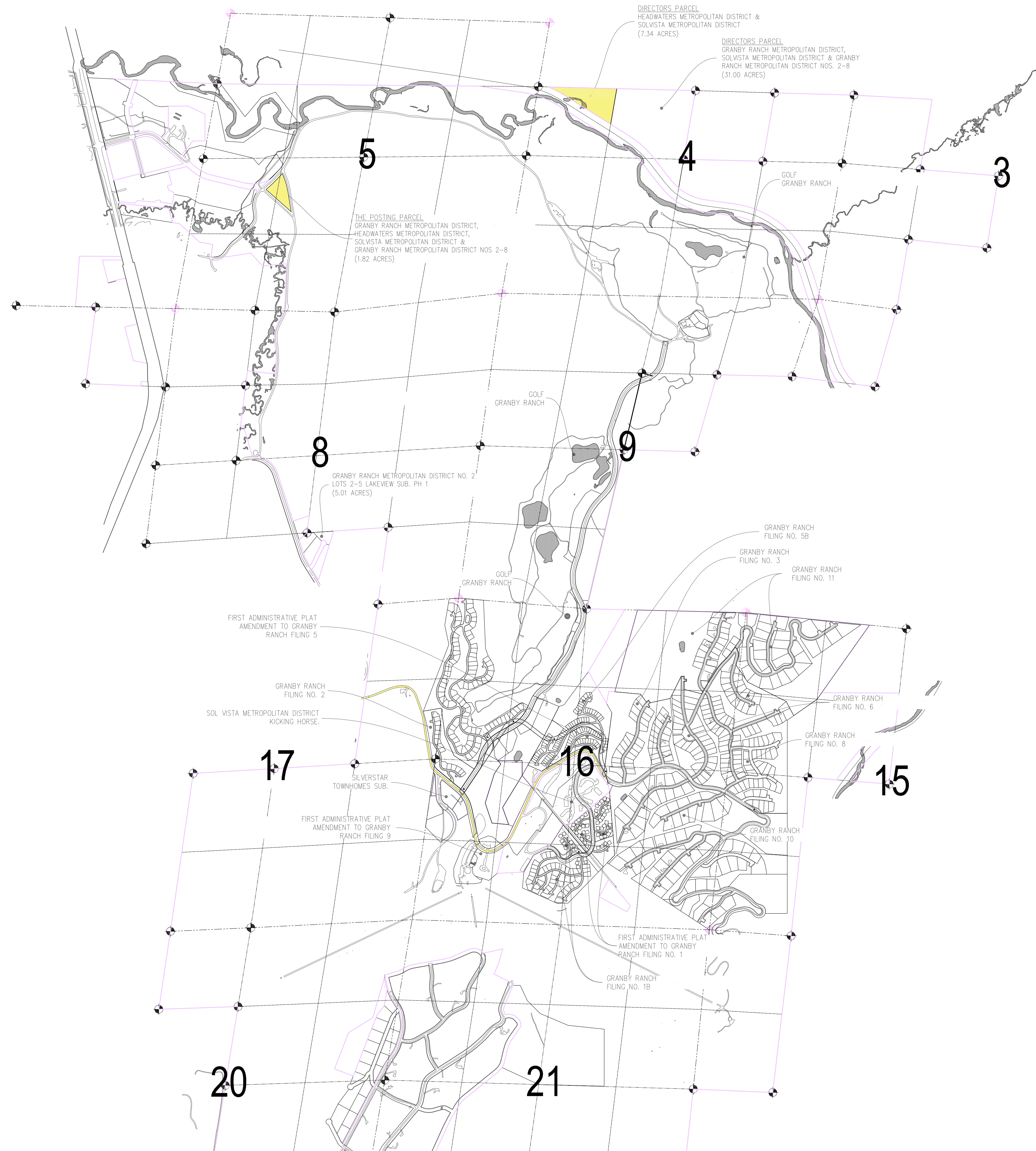


2018 BOUNDARY MAP EXHIBIT

HEADWATERS METROPOLITAN DISTRICT

A PORTION OF TOWNSHIP 1 NORTH, RANGE 76 WEST, OF THE SIXTH P.M., GRAND COUNTY, COLORADO



LEGEND	
[White Box]	GRANBY RANCH METROPOLITAN DISTRICT EFFECTIVE MARCH 2014 514.27 ACRES±
[White Box]	GRANBY RANCH METROPOLITAN DISTRICT NO.8 EFFECTIVE MARCH 2014 825.44 ACRES±
[Yellow Box]	HEADWATERS METROPOLITAN DISTRICT EFFECTIVE AUGUST 24, 2005 9.16 ACRES±
[White Box]	SOLVISTA METROPOLITAN DISTRICT EFFECTIVE JULY 7, 2005 53.13 ACRES±
[White Box]	GRANBY RANCH METROPOLITAN DISTRICT NO.2 EFFECTIVE JUNE 11, 2008 37.83 ACRES±

REVISION	DESCRIPTION	DATE

2018 BOUNDARY MAP EXHIBIT
GRANBY RANCH
GRAND COUNTY, COLORADO

SEAL
PRELIMINARY

DRAWN	CHKD
SHH	BSS
SCALE 1" = 1000'	
JOB No. 090254	
DATE : 12/21/18	
SHEET 1 OF 1	